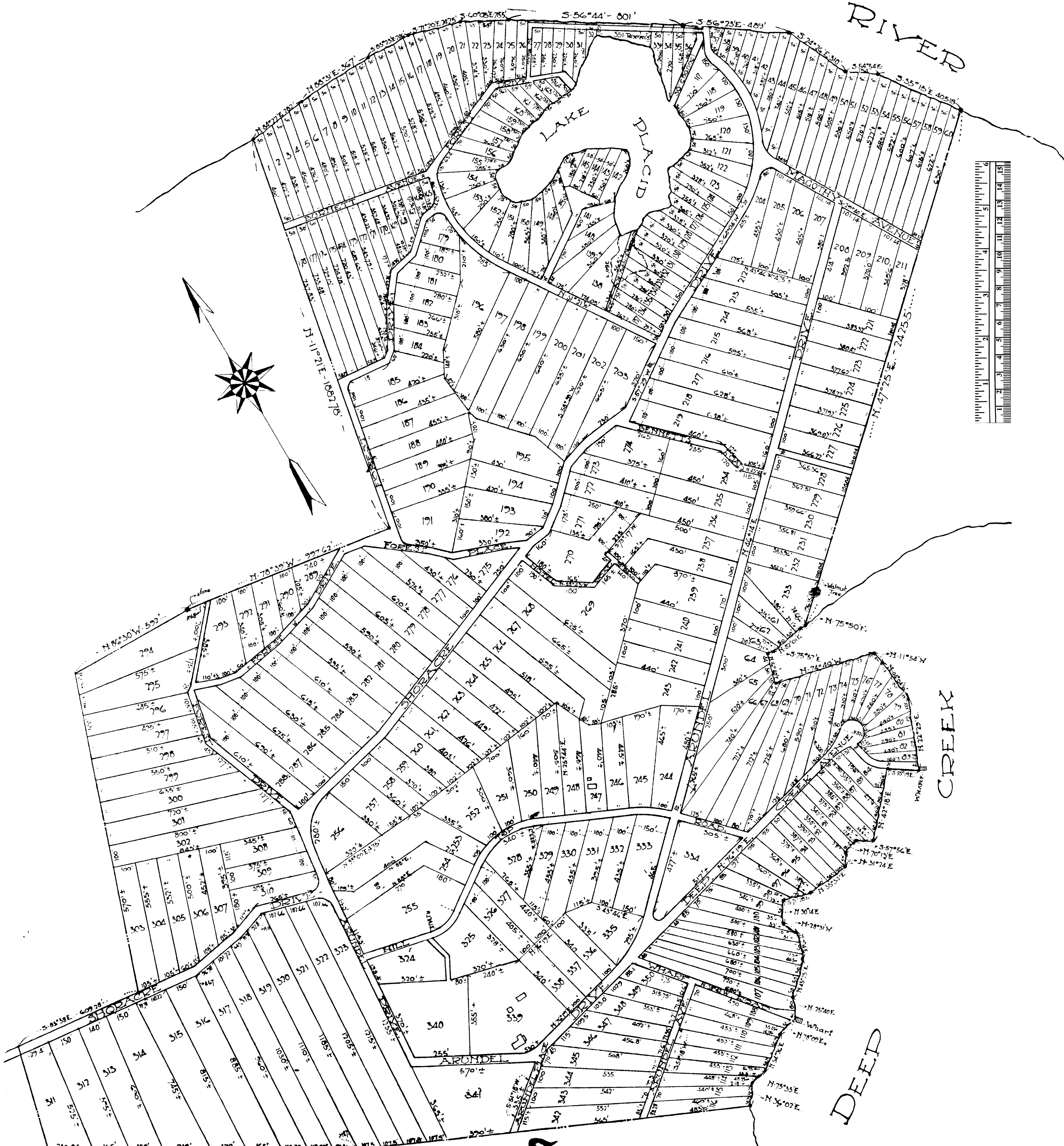


# MAGOTHY

# RIVER



**SHORE ACRES**  
 SUBDIVIDED BY  
**CITYCO-REALETY-CO.**  
 22 EAST LEXINGTON STREET.  
 SURVEYED & LAYOUT BY  
**J. SPENCE HOWARD**  
 Civil Engineer Baltimore, Md.  
 Scale 700' = 1" Jan. 1920.

MSA 58U 1235-1396